

# Document Scanners

## fi-5530C2

departmental



fi-5530C2





EUROPEAN  
ISV  
PARTNER

AP ASSURANCE  
PROGRAMME

- **Fast:** Captures up to 50 pages per minute / 100 images per minute (landscape, 200 dpi) in color, monochrome, and grayscale
- **Reliable:** Ultrasonic double-feed detection ensures reliable scanning. Even with mixed batches of documents
- **Affordable:** departmental scanner with a compact footprint (399 x 225 x 193 mm W x D x H) and true, 600-dpi resolution
- **Valuable:** Includes Adobe® Acrobat® 8 Standard, ScandAll Pro and Kofax® VRS®

# FUJITSU

THE POSSIBILITIES ARE INFINITE

<b>fi-5530C2</b>	50 Sheets	50 to 600 dpi	Simplex 50 ppm	Duplex 100 ipm	
					

## Imagine:

- From now on you'll receive your postal mail in your PC's inbox.
- Your insurance company aggregates all of its customer correspondence and contractually relevant documents like accident reports in one unified repository and your agent can tell you instantly any required detail.
- Your company's accounts payable department again regained 3% of your procurement department's last month's purchase value.
- When you get home tonight, you'll find a credit note from your local electric power provider in your mailbox, even though you've reported your last year's consumption only 8 days ago on a plain old postcard.
- You'll then relax with good reading from the works of Casanova that some "nice guys" have righteously scanned and fed into freely accessible portals for you to enjoy from your notebook.



This is no fiction, this and similar things are happening in real life, every day. Maybe even already in your company. And the Fujitsu fi-5530C2 professional document scanner is helping to make these things work smoothly.

And now think about all the beneficial things you could do in the office, if only had you access to the fi-5530C2.

If you are a knowledgeable user of document scanners, you'll certainly want to know all about the technical details. We promise, you'll be amazed about how much automated functionality fits into one of the industry's smallest "up-to-A3" document scanning device. Like these:

- 50 ppm / 100 ipm (duplex) at 200 dpi in all colour modes
- Ultrasonic Doublefeed Detection
- 100 sheet ADF
- A8 – A3 scanning (+ extra long documents)
- ScandAll Pro TWAIN and ISIS Capture Client
- Supports Capture profiles and creates searchable PDF files

In fact, the fi-5530C2 measures only 399 x 225 x 193 mm (W x D x H) but can handle a typical duty cycle of up to 4,000 documents per day. More important though, it scans at speeds up to 50 ppm / 100 ipm (landscape, 200 dpi), features dual colour CCDs with true, 600 dpi optical resolution where output resolution can be increased to 1.200 dpi. The fi-5530C2 is equipped with ultrasonic double-feed detection sensors for unattended batch scanning. This will ensure that every single document page is reliably captured. Even document batches of up to 100 differently sized sheets ranging from A8 to A3 can be processed. And with the image enhancement capabilities provided with Kofax® VRS® and the advanced features included with new ScandAll Pro, the image quality of every single document will be stunning. The fi-5530C2 combines excellent handling performance with improved content control. It delivers exceptional scanning results at an amazing value.



But if you are new to document management issues, you might be overwhelmed with the breadth of technical information, specifications and alternatives you're being presented in the industry. Well then simply identify the three core dimensions of your scanning requirements:

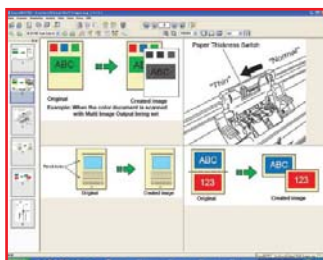
- **Daily volume** → Up to 4.000 sheets
- **Processing Speed** → 100 images per minute from front and back of 50 paper sheets
- **Document sizes** → A8 up to A3



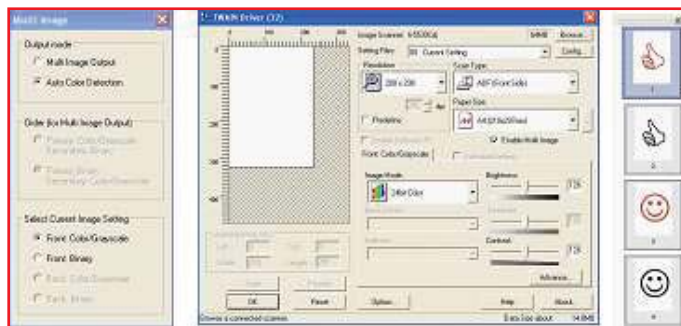


**ADOBE ACROBAT 8 STANDARD** 

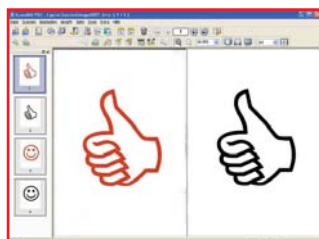
And then relax. Anything beyond, which you might have heard or read about – like technical specifications, features, scanning characteristics – the fi-5530C2 will continue to surprise you for a long time as you learn on the job. It starts from your first document capture with the fi-5530C2, an experience that will most likely exceed your expectations in terms of image quality, operational smoothness, reliability and ease of use.



You would first launch the brand new capture client application ScandAll Pro. This neat piece of software supports you for your personal requirements through ISIS or TWAIN drivers.



Capturing paper document images is one thing that ScandAll Pro will let you do instantly. But on top of that you will automatically create retrievable document information in addition to static data. For legal purposes you'll be archiving – but for business process reasons and efficiency, you'll be finding exactly that piece of information you remember must be there somewhere. Simply use the operating system's search functionality or alternatively initiate key word search routines through the bundled Adobe Acrobat 8.0 Standard.



Efficiency and productivity gains are close. So all you need to do now is get hold of a new fi-5530C2, have it installed and – Simply Scan.

#### **Kofax VRS 4.1 Basic included**

The fi-5530C2 features a full version of Kofax VRS 4.1 Basic. This application delivers a set of image enhancement features that automatically optimise each document's image quality appearance. Some of the most significant of these features include:

- Automatic de-skew without character degradation
- Automatic brightness settings that are optimal for the document type
- Contrast enhancement for faint content
- Auto-cropping of any background or noise to yield smaller image file sizes
- Despeckling of images

#### **Upgrade to the key features of VRS 4.1 Professional**

The advanced technology in VRS 4.1 Professional literally cleans up scanned images for post scan processing, which in turn makes for a huge improvement in the accuracy from your OCR and ICR software. VRS increases productivity, efficiency and in time sees a greater return for your scanning investment.

- Advanced Clarity makes even "unreadable" images legible
- Automatic image orientation adjusts skewed images, even completely rotating upside down ones, so all captured images are oriented in the same direction
- Intelligently determines if a page is blank and can be eliminated from the workflow
- Correctly identifies and retains color when it is integral to a document (e.g., logo, photo, date stamp) and eliminates it when it is not (e.g., coloured paper stock)
- Removing image noise compacts file size, reducing network traffic and storage requirements
- Scanner Configuration Utility simplifies scanner set-up and selection



THE POSSIBILITIES ARE INFINITE

# fi-5530C2 Specifications



fi-5530C2

<b>Product name</b>	<b>fi-5530C2</b>
<b>Scanner type</b>	ADF (Automatic Document Feeder)
<b>Scanning modes</b>	Simplex / Duplex, Color / Grayscale / Monochrome
<b>Image sensor type</b>	Color CCD (Charge-coupled device) x 2
<b>Light source</b>	White cold cathode discharge lamp
<b>Scanning range</b>	Maximum: A3 Portrait (297 x 420 mm), Double letter (11 x 17 in.) Minimum: A8 Portrait (52 x 74 mm)
<b>Paper weight (Thickness)</b>	52 to 127g/m <sup>2</sup>
<b>Scanning speed (A4 Landscape)</b> <sup>*1</sup> Colour <sup>*2</sup> /Grayscale <sup>*2</sup> /Mono	Simplex: 50 ppm (200 dpi) / Duplex: 100 ipm (200 dpi)
<b>Scanning speed (A4 Portrait)</b> <sup>*1</sup> Colour <sup>*2</sup> /Grayscale <sup>*2</sup> /Mono	Simplex: 35 ppm (200 dpi) / Duplex: 70 ipm (200 dpi)
<b>Paper chute capacity</b> <sup>*3</sup>	100 sheets (A4: 80g/m <sup>2</sup> ) / 50 sheets (A3: 80g/m <sup>2</sup> ) (active loadable ADF)
<b>Background colours</b>	White / Black (Selectable)
<b>Optical resolution</b>	600 dpi
<b>Output resolution</b> <sup>*4</sup> Colour (24bit)/Grayscale (8bit)/Mono (1bit)	50 to 600 dpi (adjustable by 1dpi increments), 1200 dpi <sup>*5</sup>
<b>Output format</b>	Color: 24bit, Grayscale: 8bit, Monochrome: 1bit
<b>AD converter</b>	1024 levels (10bit)
<b>Interface</b> <sup>*6</sup>	Ultra SCSI / USB2.0 (Selectable)
<b>Connector shape</b>	SCSI: Shield type 50pin (pin type), USB: B type
<b>Output mode (half-tone)</b>	Dither / Error diffusion
<b>Voltage or voltage range</b>	AC 100 to 240V, +10% / -10%
<b>Power requirement</b>	Operating: 57W or less (Sleep mode: less than 7.5W) / Temperature: 5 to 35°C (42 to 95°F)
<b>Operational environment</b>	Relative humidity: 20 to 80% (Non-condensing)
<b>Dimensions: Width x Depth x Height</b> <sup>*7</sup>	399 x 225 x 193 mm (15.7 x 8.9 x 7.6in.)
<b>Weight</b>	8.5kg (18.7lb)
<b>Included drivers</b>	TWAIN, ISIS™
<b>Environmental compatibility</b>	ENERGY STAR® and RoHS
<b>Others</b>	Yes (Standard) ultrasonic multi-feed deflection sensor
	863 mm (34 in.)
<b>Included items</b>	ADF paper chute, AC cable, AC adapter, USB cable, Setup CD-ROM (TWAIN, ISIS™, ScandAll PRO), Adobe® Acrobat® 8 Standard CD-ROM, Getting Started, QuickScan™ Pro brochure, VRS Basic CDROM



ENERGY STAR® compliant

"Adobe", "Acrobat" and the Adobe PDF logo are either registered trademarks or trademarks of Adobe Systems Incorporated in the United States and/or other countries.

Options	Parts number	Remarks
<b>Upgrade from VRS 4.x Basic to VRS 4.x Professional – Workgroup Category</b>	UO-WF04-0001	Benefit from these additional functions: Advanced Clarity to scan a greater number of once "unscannable" images / Auto-rotation of documents based on content to present a correctly oriented image / Automatic colour detection without changes to scanner settings / Small object colour detection without changes to scanner settings / Intelligent blank page deletion based on a checkbox setting / Bleed through detection by comparing the front and back of each document / Background smoothing to output an image with a solidified background colour
<b>Post Imprinter (FI-553PR)</b>	PA03334-D401	Assists document management by printing numbers, Roman characters and codes on original documents after they have been scanned.
<b>Image Processing Software Option V2.5</b>	PA43402-C22901	This image processing software enables the scanner to efficiently binarize scanned data prior to transmission.

Consumables	Parts number	Remarks
<b>Desktop Scanner Cleaning Kit</b>	SC-CLE-KIT1	Includes F1 pump spray cleaner fl uid, cleaning sheets with adhesive surface and cleaning paper
<b>Consumable Kit fi-5530C2</b>	CON-3334-004A	2 x Pick Roller (PA03334-0001); 4 x Pad Assy (PA03334-0002); total max. lifetime 400.000 documents
<b>Print Cartridge</b>	CA00050-0262	Lifetime: 4,000,000 printed characters FI-553PR print head

<sup>\*1</sup> Actual scanning speeds are affected by data transmission and software processing time.

<sup>\*2</sup> JPEG compressed figures.

<sup>\*3</sup> Maximum capacity varies, depending upon paper weight.

<sup>\*4</sup> Maximum output resolutions may vary, depending upon the size of the area being scanned and whether the scanner is scanning in simplex or duplex.

<sup>\*5</sup> Scanning limitations brought about by scanning mode, document size and available memory may occur when scanning at higher resolutions (600 dpi or higher).

<sup>\*6</sup> The Ultra SCSI interface cannot be used simultaneously with USB2.0.

<sup>\*7</sup> Excluding the ADF paper chute and stacker.

All names, manufacturer names, brand and product designations are subject to special trademark rights and are manufacturer's trademarks and/or registered brands of their respective owners. All indications are non-binding. Technical data is subject to change without prior notification.

**Fujitsu Europe Limited**  
Hayes Park Central  
Hayes End Road, Hayes  
Middlesex UB4 8FE  
England  
Tel: (+44-(0)20) 8573 4444  
Fax: (+44-(0)20) 8573 2643

**Fujitsu Deutschland GmbH**  
Frankfurter Ring 211  
80807 Munich  
Germany  
Tel: (+49-(0)89) 32378-0  
Fax: (+49-(0)89) 32378-100

**Fujitsu Italia S.p.A.**  
Via Nazario Sauro, 38  
20099 Sesto San Giovanni (MI)  
Italy  
Tel: (+39) 0226294.1  
Fax: (+39) 0226294.201

<http://emea.fujitsu.com/scanners>

**FUJITSU**

THE POSSIBILITIES ARE INFINITE